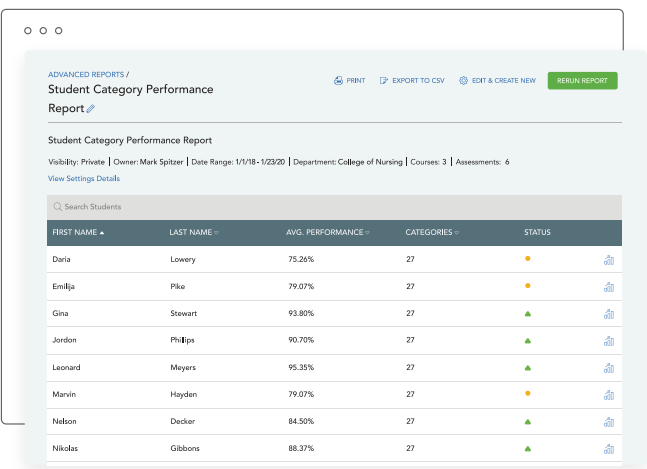


# Benchmarking Reports

ExamSoft and Clinical Judgment Exams

Take advantage of pre-written assessments that accurately gauge student learning and competency. Category-based reporting at the program level and student level will measure students' true mastery of concepts against a national cohort of nursing students.



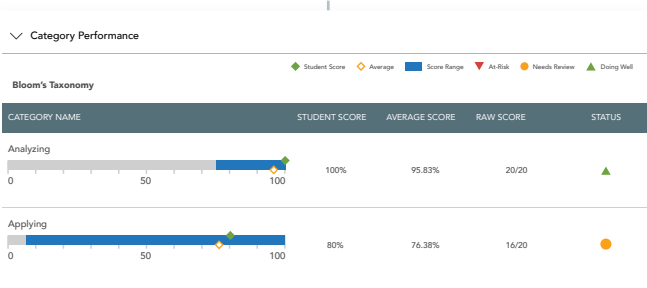
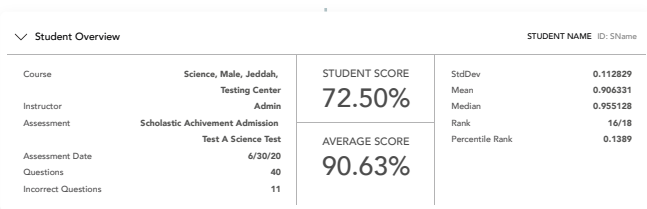
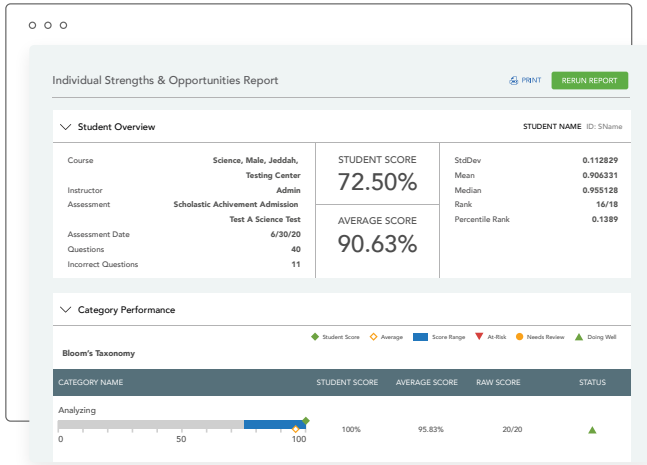
## Student Scores

The exam-takers are listed, along with the percentage correct and the total points earned.



## Strength and Opportunity Report

Shows each exam-taker's score, along with their performance in each category. You can compare the individual's performance to the class and national averages.



## Student Overview Section

In the top section of the report, you'll see this exam-taker's score and statistics, along with a comparison to the class average, national average, class percentile, and national percentile.



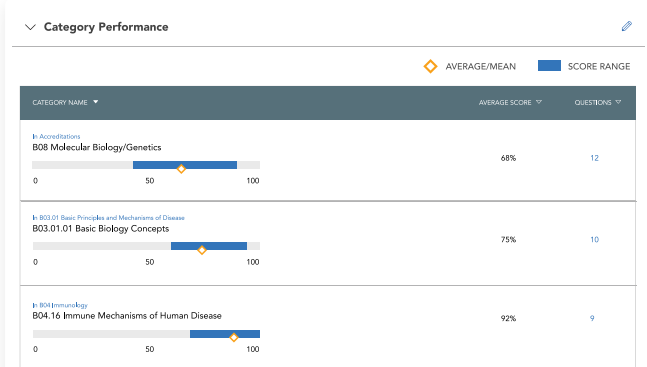
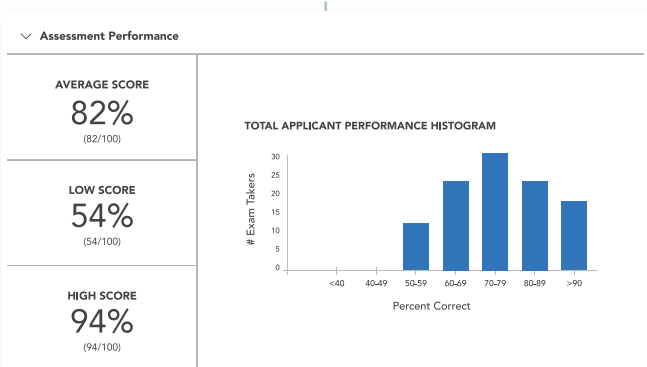
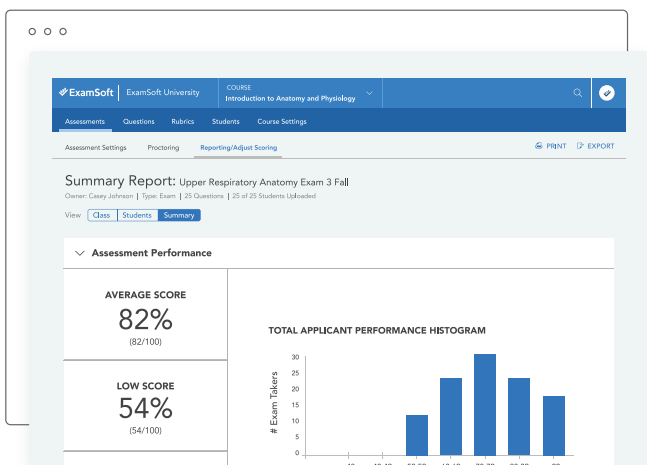
## Category Performance Section

In this section, you can see this exam-taker's performance in each category. Refer to the icon descriptions, and then use the bar graph to compare the student's average to the class average and the national average (if available). Also refer to the Status column to see if the student's performance is considered as Needs Improvement, Needs Review, or Doing Well.



## Summary Report

Shows the number of exam-takers who scored in each percentile, along with the overall performance in each category. You'll be able to compare the class average to the national average overall and for each category.



## Assessment Performance Section

This section features a histogram that shows the number of exam-takers who scored in each percentile. You also can see the national average (if available), the class average, the low score, and the high score.



## Category Performance Section

In this section, you can see the overall performance in each category. Refer to the icon descriptions, and then use the bar graph to compare the class average to the national average (if available).